

AHOY!  **BERLIN**

Disclaimer

This document (including all images and information in it) should not be disclosed to any third party or used for any other purpose without the express written permission of the disclosing party. All rights reserved.

Ahoy! Berlin

Ahoy Berlin is a space for coworking and innovation, where companies and individuals can rent fully equipped work stations, amazing conference rooms and quiet offices under flexible terms in a playful and cosy environment.

Ahoy offers clients and members access to multiple conference rooms of various sizes that can be set up to host meetings, conferences, workshops and many other sorts of events. Most rooms have built-in audio-visual presentation capabilities, with additional equipment like flipcharts, pinboards and whiteboards available to reserve.

Each room's interior is designed differently, providing a unique backdrop and tailored experience for your event. Whether you are looking for a small room for a private meeting, or a fully-equipped conference room for larger presentations or workshops, we've got you covered!

3.0G Overview

Event Space & Workspace Units

Our 3rd floor offers our most expansive setup for bigger events. This vast unit of Ahoy is designed as an adaptable, modular Event + Workshop space, constituting four diverse wings, each tailored to suit a range of needs while still providing space and possibility for adaptation.

Each wing can be reserved individually as needed, or in combination with one another, to extend your event's potential. The modular setup in our 3rd floor was put together particularly with our larger clients in mind - those looking to host events from multifaceted conferences and networking meetups, to information markets, and expansive workshops.

Modular bookings, looking to access multiple units of the 3rd floor in combination, are offered at a discounted rate in relation to the units booked.

3.0G Floorplan

Stern

> North Wing <

- Large Workspace
- 1 Small Meeting Room
- 1 Mid Size Meeting Room

Port

> East Wing <

- Large Workspace
- 1 Small Meeting Room
- 1 Mid Size Meeting Room

Starboard

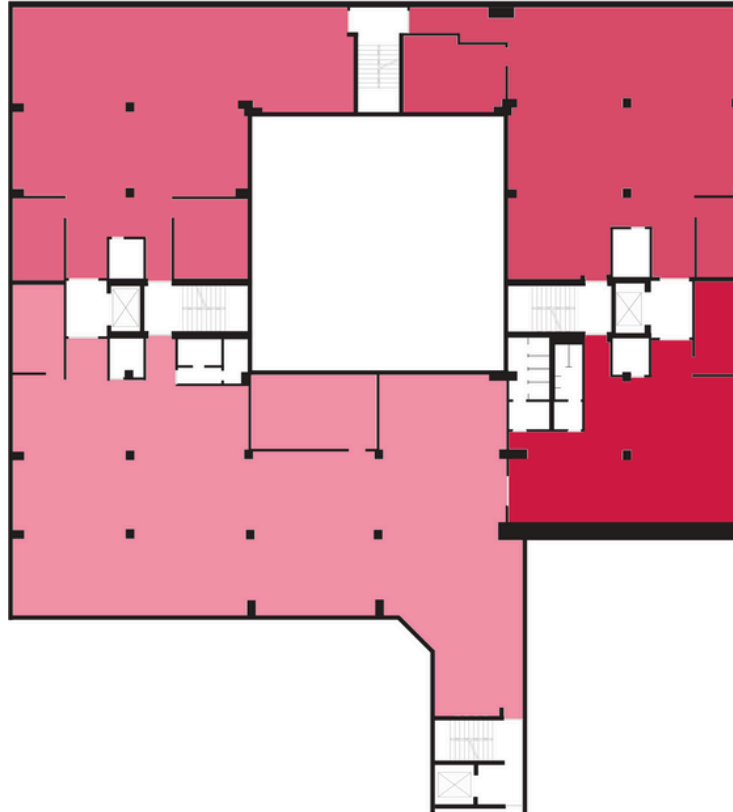
> West Wing <

- Event Space
- 1 Small Meeting Room
- 1 Large Conference Room
- Kitchen Area
- WCs

Bow

> South Wing <

- Mid Size Workspace
- 1 Small Meeting Room
- WCs



Starboard - 3.0G West Wing

Event Space & Conference Rooms

A large, modern, multi-purpose event space. The main wing of our 3rd floor. The “Starboard” offers the largest space and greatest capabilities for a variety of events.

Comprised of multiple sections, centered around a large, open event space, the West Wing is designed as an adaptive space, able to host large conferences, meetups, workshops, and a range of other event styles. The event space is preceded by a large, open-plan foyer area, equipped with a reception desk and functional kitchen unit, with a central island and social seating area.

In addition to the event space, the Starboard West Wing includes one larger conference room and one smaller meeting room, as well as direct access to bathroom and shower facilities.

Starboard - West Wing

Specifications

Room Size:
approx. 540m²

Maximum Capacity in:
Rows - 150 pax

2500 EUR per day

Features :

Large open space, able to cater to diverse setups and event styles

EPSON EB-2065 Auto Correcting Projector
Mounted Speaker System (Fostex PM0.3d)

2 Meeting rooms

Reception area

Kitchen + networking area

Bathrooms + shower facility

Additional equipment available







Proviat
guten. SORTE.









Lima

Maximum Capacity:

Boardroom - 6 pax

Standalone room rental:

40 EUR per hour

320 EUR per day

**included at no extra cost
when booking wing*



Oslo

Maximum Capacity:

Boardroom - 18 pax

Standalone room rental:

57 EUR per hour

450 EUR per day

**included at no extra cost
when booking wing*

Stern - 3.0G North Wing

Workspace & Conference Rooms

A spacious and flexible, functional workshop space. The “Stern” is one of our two large workshop areas on the 3rd floor.

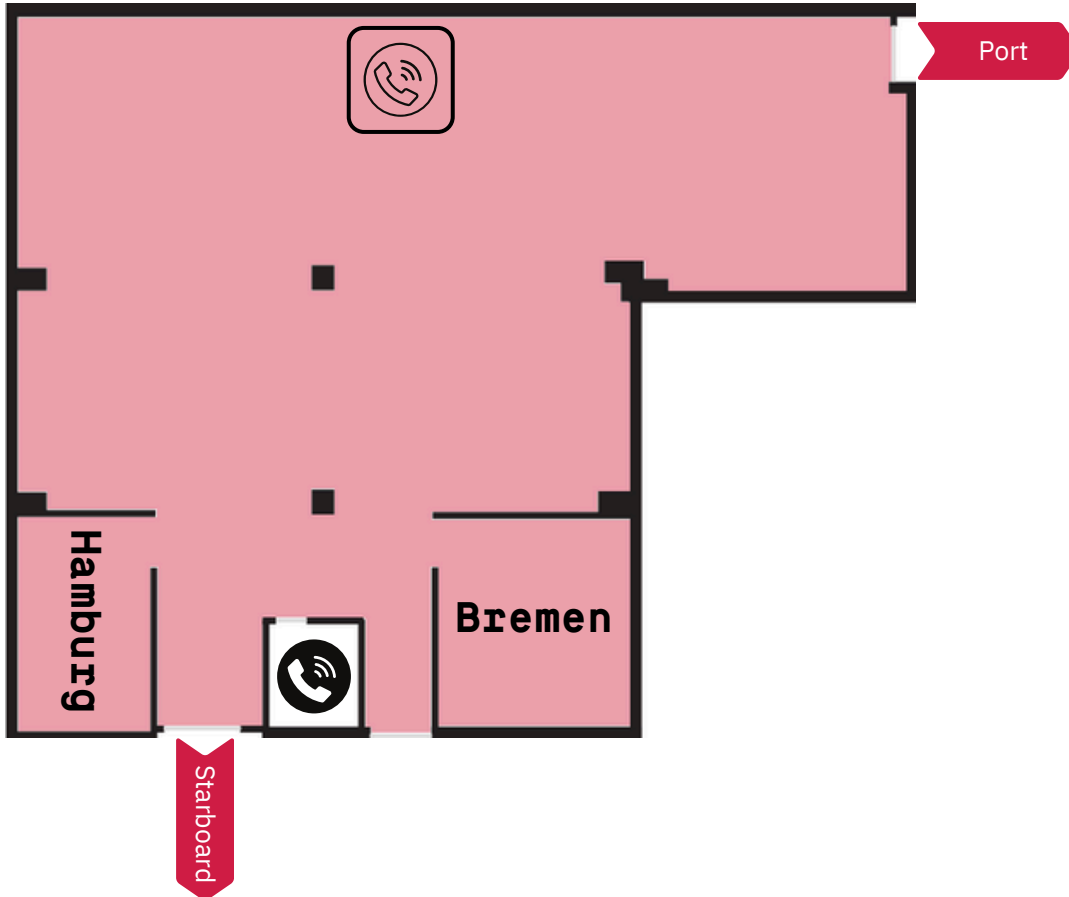
Encircling the inner courtyard, this workshop area lends itself to diverse large group work and bigger, flexible meetings. The space comes set up with desks set up in five islands, with movable dividers to create engaging workspaces, interspersed with high tables, a central open space, and two silent “phonebooth” workstations.

In addition to the core workspace, the North Wing also encompasses one mid sized meeting room - Bremen - and one smaller meeting room - Hamburg - to provide even greater possibilities for breakout work.

As a flexible workspace, the unit has the potential for customised setups with regards to the desks, as well as the other furnishings where applicable.

Stern - North Wing

Specifications



Room Size:
approx. 280m²

Maximum Capacity in:
Desk Islands - 40 pax

1750 EUR per day

Features :

Large open space, geared towards workshops and group work with abundant desk space

2 Meeting rooms

2 Soundproof "phonebooth" workstations

Additional equipment available







Hamburg

Maximum Capacity:

Boardroom - 6 pax

Standalone room rental:

40 EUR per hour
320 EUR per day

**included at no extra cost
when booking wing*



Bremen

Maximum Capacity:

Boardroom - 8 pax

Standalone room rental:

45 EUR per hour
360 EUR per day

**included at no extra cost
when booking wing*



Port - 3.0G East Wing

Workspace & Conference Rooms

A spacious and flexible, functional workshop space. The “Port” the second our two large workshop areas on the 3rd floor, twinned with its neighbour wing, the “Stern”.

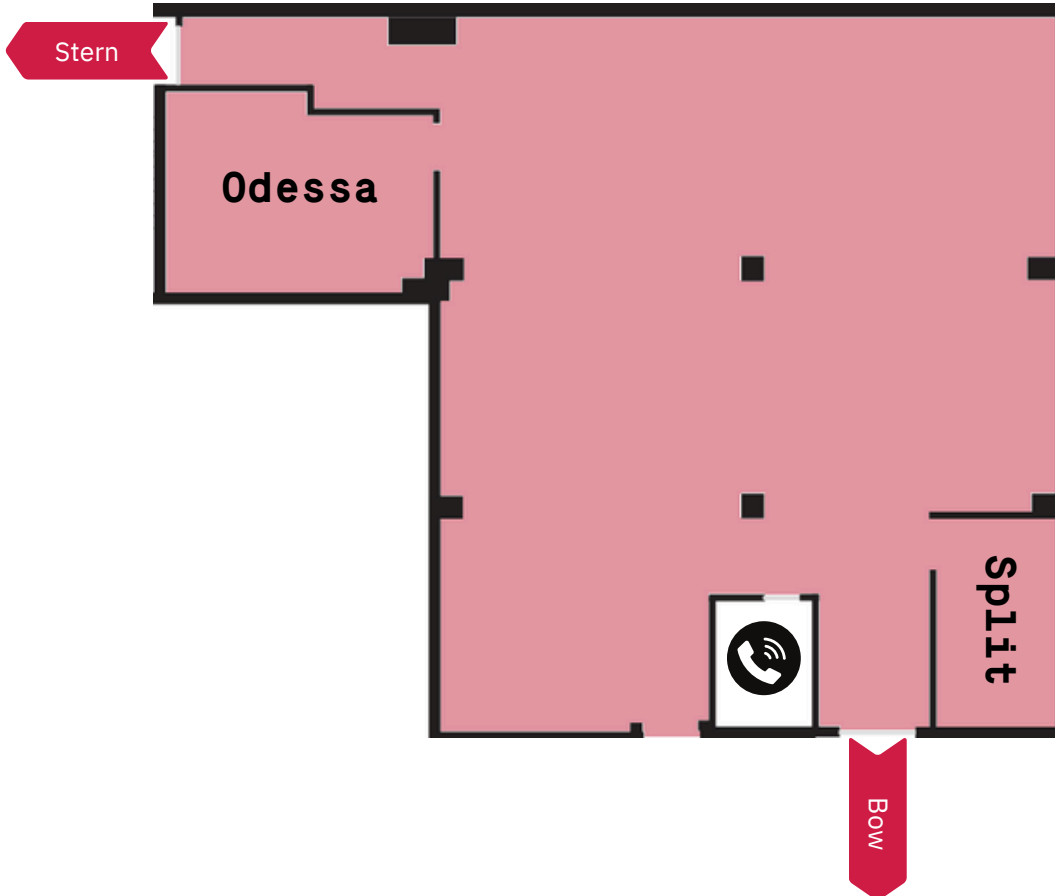
Encircling the inner courtyard, this workshop area lends itself to diverse large group work and bigger flexible meetings. The space comes set up with desks set up in six blocks, decorated with sofa seating areas, and interspersed with high tables, and two silent “phonebooth” workstations.

In addition to the core workspace, the East Wing also encompasses one mid sized meeting room - Odessa - and one smaller meeting room - Split - to provide even greater possibilities for breakout work.

As a flexible workspace, the unit has the potential for customised setups with regards to the desks, as well as the other furnishings where applicable.

Port - East Wing

Specifications



Room Size:
approx. 280m²

Maximum Capacity in:
Desk Islands - 48 pax

1750 EUR per day

Features :

Large open space, geared towards workshops and group work with abundant desk space

2 Meeting rooms

2 Soundproof "phonebooth" workstations

Additional equipment available







Split

Maximum Capacity:

Boardroom - 6 pax

Standalone room rental:

50 EUR per hour
400 EUR per day

**included at no extra cost
when booking wing*



Odessa

Maximum Capacity:

Boardroom - 8 pax

Standalone room rental:

50 EUR per hour
400 EUR per day

**included at no extra cost
when booking wing*

Bow - 3.0G South Wing

Openspace & Conference Room

The 3rd floor's designated Open Space, the "Bow", boasts a grand wall of windows looking out towards the city's illustrious Fernsehturm. The "Bow" is available either for shared use, offering social and chill-out area, or to be booked for private usage as needed.

As an Open Space, the area caters well to social meetups and more casual small group work, complemented by a number of seating areas with sofas, coffee tables, and high tables, accented with gentle wooden features. The wing includes one smaller conference room - Liverpool - for intimate meetings, comfortably set up to pace the day with spill-out sessions in the open space of the wing.

When booked privately, the open space offers extensive possibilities for diverse setups - a blank canvas to mold to whatever visions and needs you have for your event. High tables, sofas, and seating area can all be set up to best suit any event style, and additional equipment, as well as additional furnishings where applicable.

The wing also contains bathroom facilities, making it a practical location for social events.

Bow - South Wing

Specifications

Room Size:
120m²

Maximum Capacity in:
Dependent on setup

600 EUR per day
(only in addition to other wings)

Features :

Large open space, able to adjust to various needs, ideal for networking, flexible groupwork, or “info-market” style displays

1 Meeting room

Bathroom facilities

Additional equipment available









Liverpool

Maximum Capacity:

Boardroom - 8 pax

Standalone room rental:

40 EUR per hour
320 EUR per day

**included at no extra cost
when booking wing*

